

Standard calamansi mousse

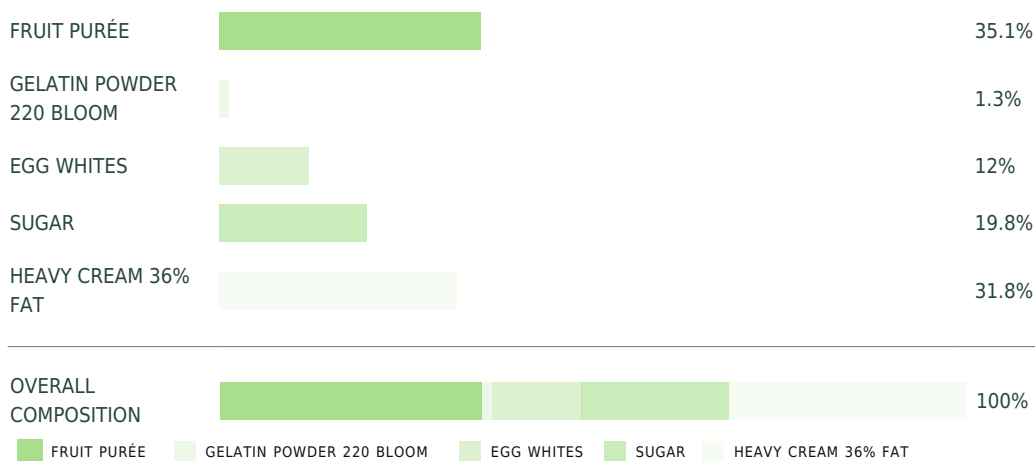
Description

This mousse uses traditional techniques to create a fruity flavor. It has a fruit purée base, as well as two whisked ingredients - whipped cream and Italian meringue - and the whole thing is jellied using gelatin.

Suggested uses

- Plated desserts
- Desserts, tarts and mini gateaux
- Dessert glasses

Overall composition



Step 1

Whipped cream

Composition	318 g	100%
Heavy cream 36% fat	318 g	100%

Expansion when whipped 250%

Technique

Whisk the cream (40°F or 4°C) at medium speed until its texture becomes light and frothy.

Standard calamansi mousse

35.1% FRUIT PURÉE 19.8% ADDED SUGAR

Ingredients
Calamansi purée, Heavy cream 36% fat, Sugar, Egg whites, Gelatin powder 220 Bloom

FREEZABLE EXPANSION WHEN WHIPPED 230%

Step 2

Standard Italian Meringue

Composition	318 g	100%
Sugar	170.1 g	53.5%
Water	44.5 g	14%
Egg whites	103.4 g	32.5%

Expansion when whipped 380%

Technique

Mix the water and sugar in a saucepan, cook them at 245°F (118°C) and combine them with the beaten egg white.

Whisk using a mixer at medium speed until cool (approx. 86°F or 30°C).

Step 3

Standard mousse

Composition	1000 g	100%
Gelatin powder 220 Bloom	13 g	1.3%
Calamansi purée	101 g	10.1%
Calamansi purée	250 g	25%
Standard Italian Meringue	318 g	31.8%
Whipped cream	318 g	31.8%

Expansion when whipped 230%

Technique

Sprinkle the gelatin onto the smaller portion of Calamansi purée (40°F or 4°C), then leave it for 15 to 20 minutes until it is hydrated.

Heat the mixture to between 120 and 140°F (50 and 60°C) so that the gelatin melts, then combine it with the second portion of purée (40°F or 4°C). Homogenize with a mixer.

Combine approximately one third of the fruit purée with the Italian meringue, then start mixing with a whisk to assimilate their textures.

Add the rest of the fruit purée, fold it in with a spatula and finish off by gently adding the whipped cream in such a way that the mix remains light and frothy.

Pour immediately.



FRUIT PURÉE USED

Ben Tre Calamansi

TASTING TEMPERATURE

Chilled

WAYS OF CONSUMING

On site ,
Takeaway

STRENGTHS

Usual process and recipe